



# TrabecuLink Augments

for segmental acetabular defects

Product Rationale

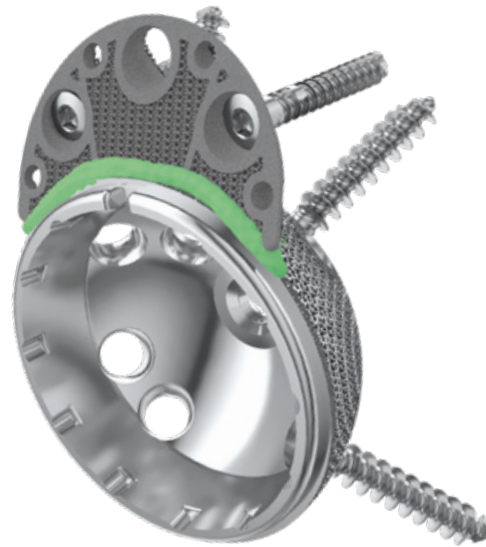


## The latest material and fixation technologies have been taken into account and used in the design of the TrabecuLink Augments

### TrabecuLink Augments

- The TrabecuLink Augments offer an attractive solution in cases of segmental acetabular defects as a prosthetic alternative to structural allograft
- The biocompatible material Tilastan-E<sup>1,2</sup> and the TrabecuLink structure offer an excellent prerequisite for a stable and permanent treatment of bone defects.
- Furthermore, the 3-dimensional TrabecuLink structure, with its pore size, porosity and structure depth, also provides an excellent basis for promoting osteoconduction and microvascularization, taking into account the requirements for the structure-covering protein layer (fibronectin - vitronectin - fibrinogen)<sup>3,4</sup>.
- The Augments can be combined with all LINK cups, in particular with the MobileLink cup, which has variable options for placing bone screws, as the Augment design allows flexibility to put bone screws through shell and Augment.

- In case of acetabular defects the combination of LINK shell with TrabecuLink Augments can be the solution to help conserve the physiological patient anatomic and kinematics.
- The Augment size range allows good fit for different anatomies and defects<sup>5</sup>.

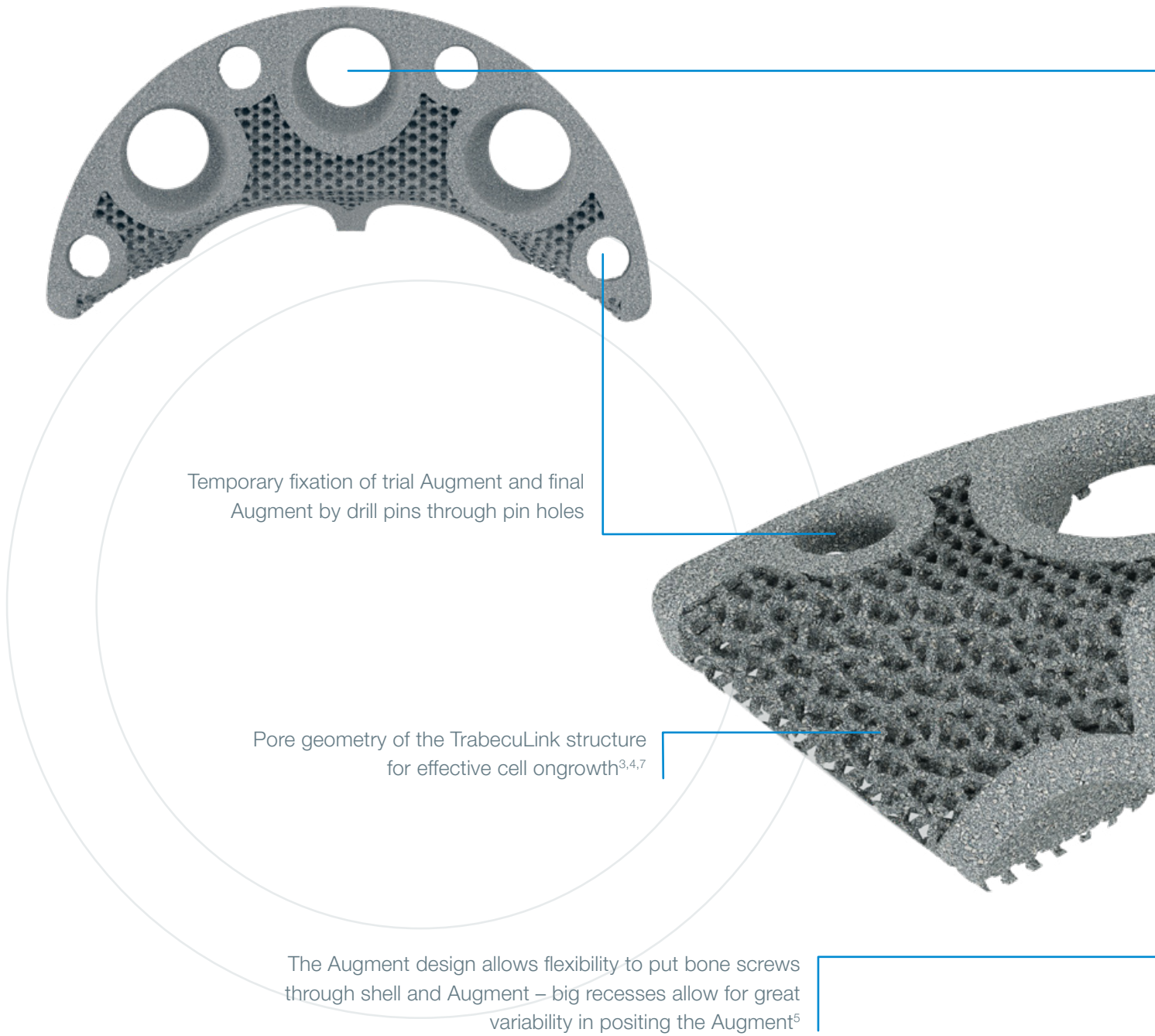


Great connection between shell and Augment by application of cement mantle (according to surgical technique)<sup>5,6</sup>

### Augment sizes



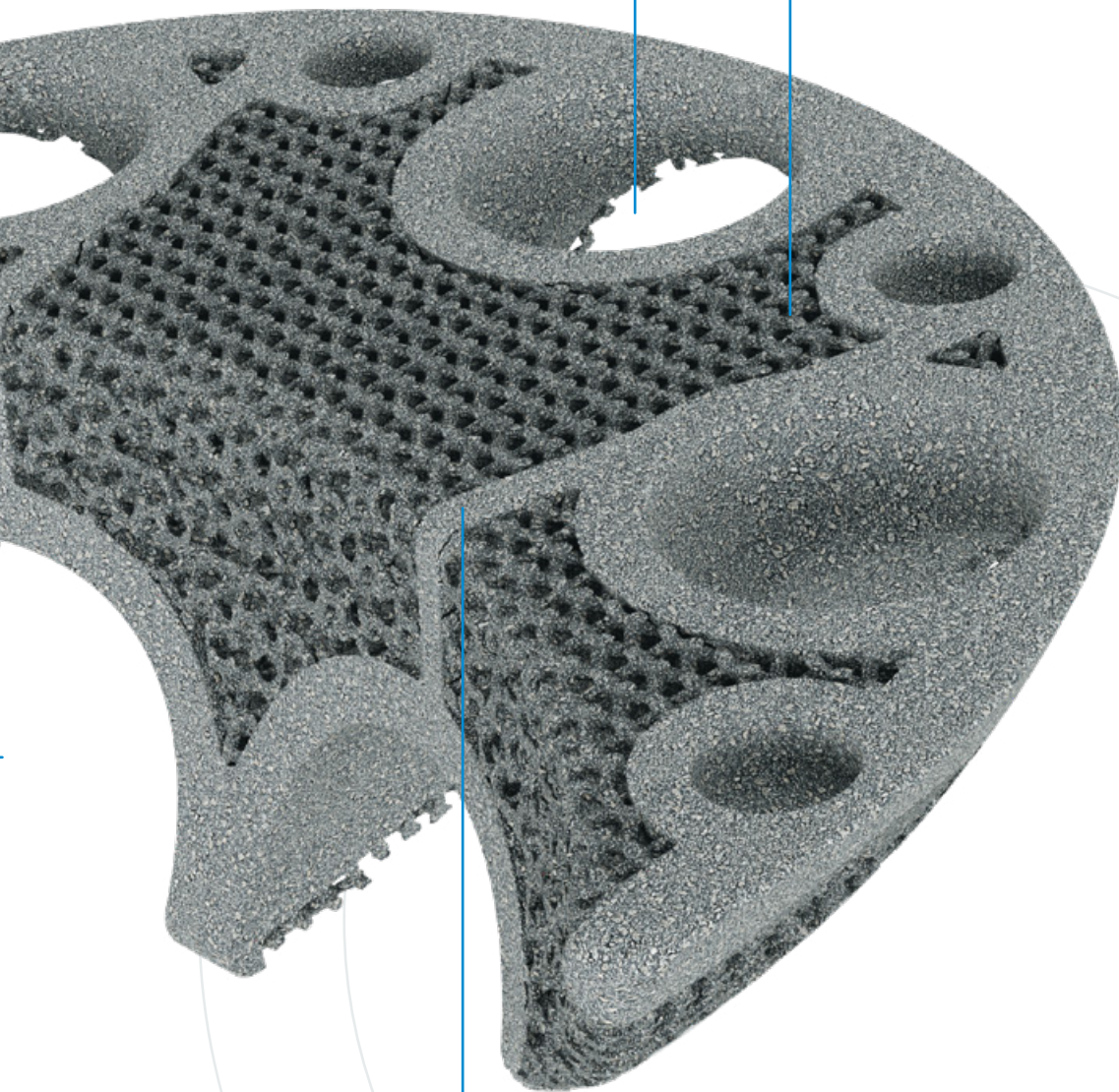
Outer Ø of Augment width (mm)	For shell sizes (mm)	Augment depth (mm)			
		10	15	20	30
44	42-46	X	X		
46	44-48	X	X	X	
50	48-52	X	X	X	X
54	52-56	X	X	X	X
58	56-60	X	X	X	X
62	60-64	X	X	X	X
68	66-70	X	X	X	
74	72-76	X	X		





Holes in Augments allow for great variability to orient bone screws<sup>5</sup>

Tilastan-E:  
Biocompatible material<sup>1,2</sup>



Solid lines on the top of the Augment indicate where the recesses are located

Augments can be used upside down as Butresses<sup>5</sup>

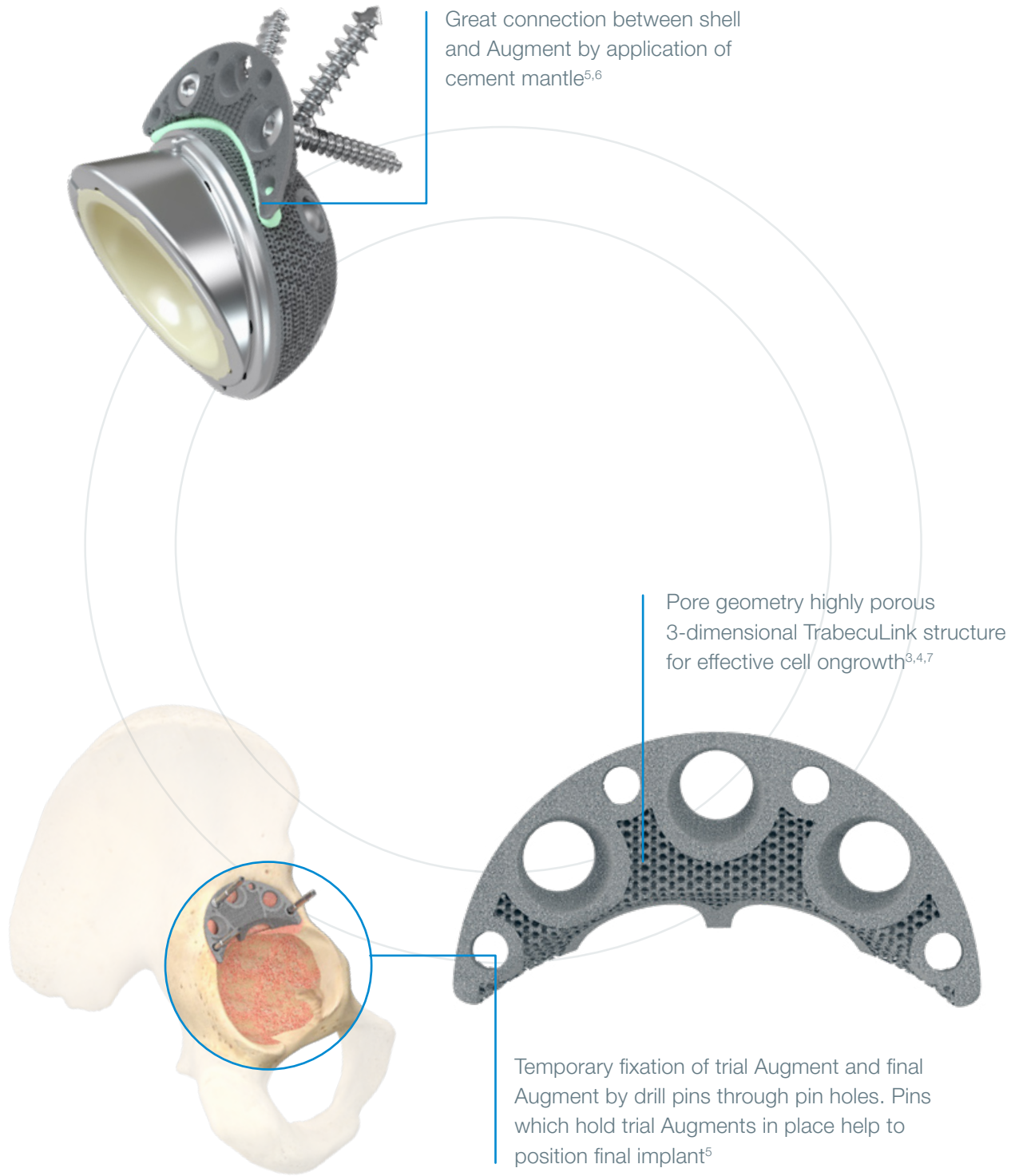
Variable bone screw angle

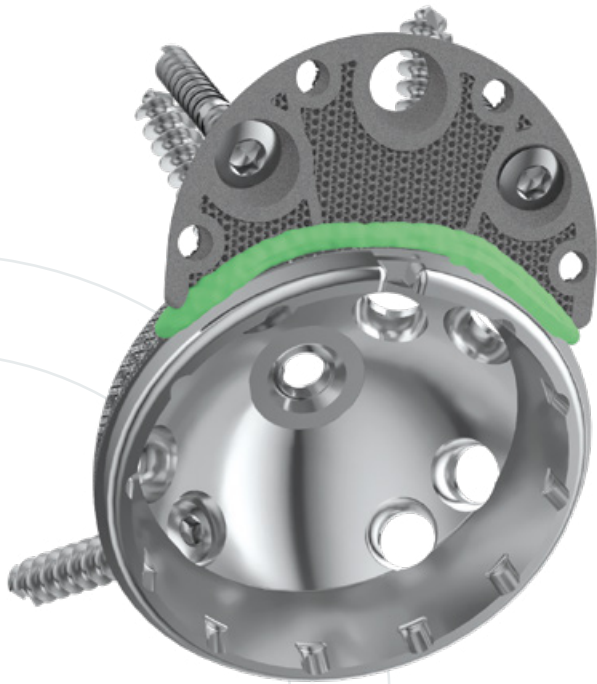
Solid lines on the top of the Augment indicate where the recesses are located

Augments sizes are adapted to shell sizes (e. g. Augment size 54 mm for shell sizes outer Ø 52 - 56 mm, see page 03)

Low profile

Can be combined with all LINK Cups





### Versatility

- The Augment size range allows good fit for different anatomies and defects<sup>5</sup>
- Variable bone screw angulation/options
- The Augment design allows flexibility to put bone screws through shell and Augment – Big recesses allow for great variability in positioning the Augment<sup>5</sup>
- Low Augment profile
- Augments can be used upside down as Butresses<sup>5</sup>



### Reproducible surgical technique

- The Augment forceps helps to place the Augment<sup>5</sup>
- Temporary fixation of trial Augment and final Augment by drill pins through pin holes
- Pins which hold trial Augments in place help to position final implant<sup>5</sup>
- Small inventory



### Effective fixation

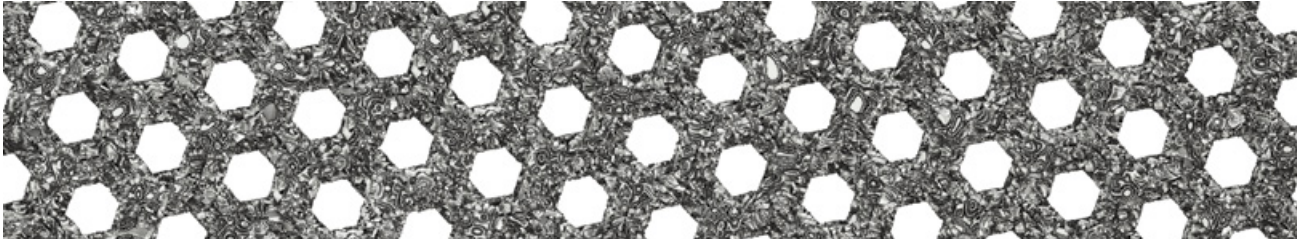
- Sufficient grip of Augments. Augments have a great primary stability<sup>5</sup>
- Pore geometry of the TrabecuLink structure for effective cell ongrowth<sup>3,4,7</sup>
- Great connection between shell and Augment by application of cement mantle (according to surgical technique)<sup>5,6</sup>



## TrabecuLink

### 3-dimensional structure for effective cell ongrowth

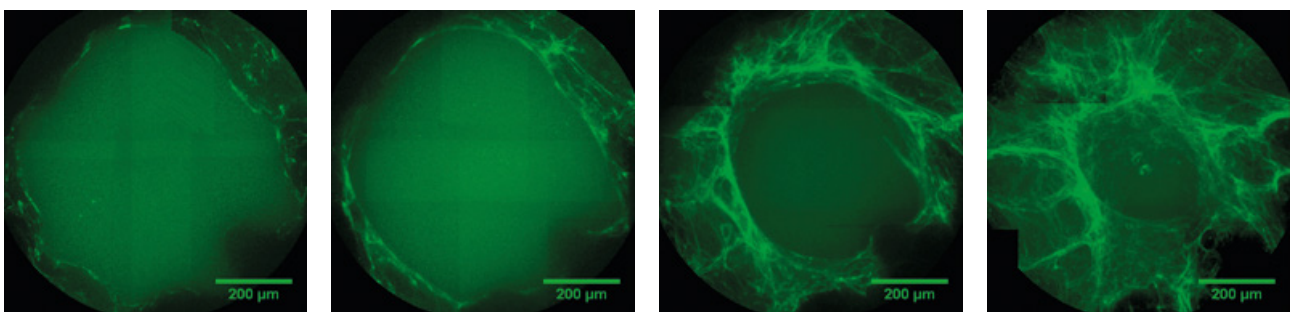
- The pore geometry (porosity: 70%, pore size: 610-820  $\mu\text{m}$ , structure depth: up to 1 mm) ensures excellent cell ongrowth.<sup>3,4,7</sup>



### TrabecuLink pore filling

The sequence of images shows a pore of the TrabecuLink structure being filled with tissue under in-vitro cell culture conditions. The fibronectin laid down by human fibroblasts and continually reorganized over a period of eight days is visible as green fibers.

Fibronectin is a component of the extracellular matrix that is formed at an early stage of the healing process. It forms a basis for the embedding of collagen, which is essential for mineralization of the tissue and ingrowth of bone into the structure. Apart from the accumulation of fibronectin, which increases over time, a clear contraction of the matrix towards the center of the pore can be observed. This contraction mechanism, which is attributable to the cellular forces acting in the tissue, accelerates the rate at which the pore is filled with tissue, compared to a layer-by-layer tissue growth.



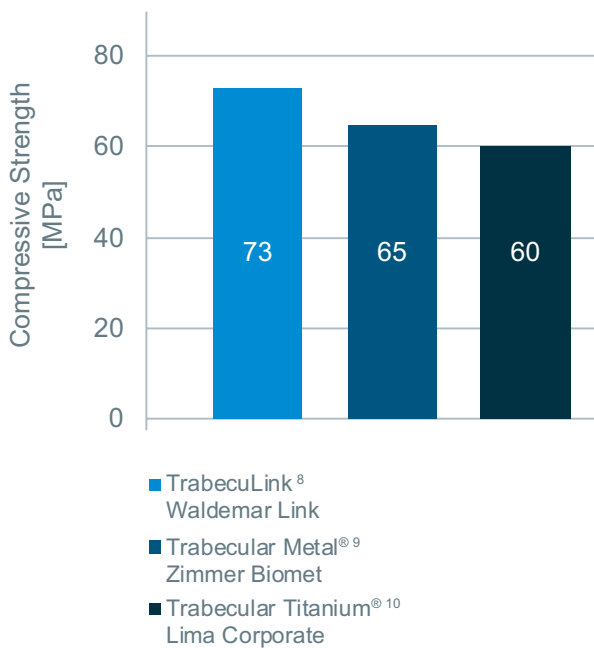
(Reference: Joly P et al., PLOS One 2013; <https://journals.plos.org/plosone/article?id=10.1371/journal.pone.0073545>). Julius Wolff Institute, Charité - Universitätsmedizin Berlin

## Sufficient mechanical stability

Mechanical properties, such as compressive strength and elastic modulus, of the tested cellular Ti6Al4V structures are similar to those of human bone. Thus, stress-shielding effects after implantation might be avoided due to a reduced stiffness mismatch between implant and bone.

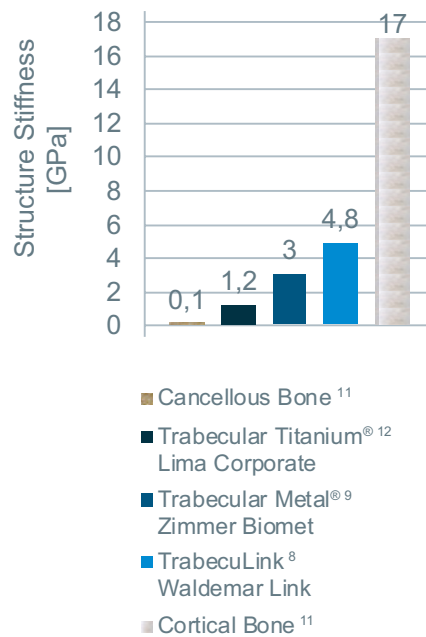
### Compressive strength

The TrabecuLink structure offers the highest compressive strength among Trabecular Metal® and Trabecular Titanium®, reducing the risk of material failure of the orthopaedic implant.



### Stiffness

TrabecuLink structure offers the highest structure stiffness among Trabecular Metal® and Trabecular Titanium® but lower than the cortical bone for more physiological loading.



- 1 Data on File, Waldemar Link.
2. Wang, Hong, et al. "A comparison of biocompatibility of a titanium alloy fabricated by electron beam melting and selective laser melting." PLoS one 11.7 (2016): e0158513
3. Cecile M. Bidan, Krishna P. Kommareddy, Monika Rimpler, Philip Kollmannsberger, Yves J.M. Brechet, Peter Fratzl, John W.C. Dunlop et al. (2012) How Linear Tension Converts to Curvature: Geometric Control of Bone Tissue Growth. PLoS ONE 7(5): e36336
4. Pascal Joly, Georg N. Duda, Martin Schöne, Petra B. Welzel, Uwe Freudenberg, Carsten Werner, Ansgar Petersen et al. (2013) Geometry-Driven Cell Organization Determines Tissue Growths in Scaffold Pores: Consequences for Fibronectin Organization. PLoS ONE 8(9): e73545. <https://doi.org/10.1371/journal.pone.0073545>
5. Internal Document, Waldemar Link.
6. Beckmann, N. A., et al. "Comparison of the stability of three fixation techniques between porous metal acetabular components and Augments." Bone & Joint Research 7.4 (2018): 282-288.
7. Steinemann SG: Compatibility of Titanium in Soft and Hard Tissue – The Ultimate is Osseointegration; Materials for Medical Engineering, WILEY-VCH, Volume 2, Page 199-203
8. Internal Test Report - W. Link GmbH & Co. KG
9. Characterization of a new porous tantalum biomaterial for reconstructive orthopaedics - J.D. Bobyn, S.A. Hacking, S.P Chan, K.K. Toh, J.J. Krygier, M. Tanzer
10. Additive manufacturing of Trabecular Titanium orthopedic implants - E. Regis, E. Marin, L. Fedrizzi, M. Pressacco
11. Bone-Tissue Engineering Using Synthetic Biodegradable Polymer Scaffolds - J.S. Temenoff, L. Lu, and A.G. Mikos
12. Trabecular Titanium – Naturae Imitatio - Lima Corporate

## Waldemar LINK GmbH & Co. KG, Hamburg

All content in this catalog, including text, pictures and data, is protected by law. Every instance of use, whether in part or in whole and which is not permitted by law, is subject to our prior consent. In particular, this applies to the reproduction, editing, translation, publishing, saving, processing, or passing on of content stored in databases or other electronic media and systems, in any manner or form. The information in the catalogs is solely intended to describe the products and does not constitute a guarantee.

The Surgical Technique described has been written to the best of our knowledge and belief, but it does not relieve the surgeon of his/her responsibility to duly consider the particularities of each individual case.

Products shown in this document may not be available in your country. The product availability is subject to the approval and/or registration regulations of the respective country. Please contact Waldemar LINK GmbH & Co. KG if you have questions about the availability of LINK products in your country.

Waldemar LINK GmbH & Co. KG and/or other corporate affiliated entities own, use or have applied for the following trademarks in many jurisdictions: LINK, BiMobile, SP II, Modell Lubinus, E-Dur, EndoDur, T.O.P. II, BetaCup, CombiCup PF, CombiCup SC, CombiCup R, MobileLink, C.F.P., LCU, SP-CL, LCP, MIT-H, Endo-Model, Endo-Model SL, MP, MEGASYSTEM-C, GEMINI SL, SPAR-K, LCK, LINK OptiStem, HX, TiCaP, X-LINKed, PorAg, LINK PorEx, BiPorEx, PorEx-Z, TrabecuLink, Tilastan, customLINK, RescueSleeve, Stactip, VACUCAST.

Other trademarks and trade names may be used in this document to refer to either the entities claiming the marks and/or names or their products and are the property of their respective owners.

